

Particle Analysis Services (PAS) Order Form

Customer Name:	Date Submitted:
Company Name:	Purchase Order Number:
Mailing Address:	OR Credit Card Number:
City, State, Zip:	Expiration Date:
Phone Number:	Security Code:
Fax Number:	Name on Credit Card:
Email Address:	Type of Card: <input type="checkbox"/> Visa <input type="checkbox"/> MasterCard

Bill To Contact Person:
Bill To Phone Number:
Bill To Address:
Bill To City, State, Zip:

Return Samples: <input type="checkbox"/> Yes <input type="checkbox"/> No
If Yes, please provide <u>shipping info</u> (place to ship, method, and account number):

Basic Analysis: \$400/analysis

Method Development: \$250/hour

Basic analysis includes a single FlowCAM data run using the most appropriate magnification. If method development is required (e.g. determining proper dilution, correct magnification/flow cell size, investigating diluents, etc.), a \$250/hr charge applies, with minimum one hour.

A completed [Sample Submission Form](#) must be submitted with each unique sample (plus MSDS if necessary).

Method Development (if necessary)	# Hours	X \$250/hr	=	TOTAL
		X \$250	=	
Sample Description:	Number of Samples:	X \$400/analysis:	=	
		X \$400	=	
		X \$400	=	
		X \$400	=	
		X \$400	=	
		Subtotal	=	
		+ Tax (if applicable)	=	
		TOTAL	=	

Basic Analysis includes the following results:

- Up to four (4) histograms/scatterplots of the run data chosen from all available plots (see second page).
- If applicable, export of entire run data set in spreadsheet format (MS Excel format).
- Export of Summary Statistics chosen (see second page for choices) in spreadsheet format (MS Excel) and/or PDF format.
- All particle images captured delivered in TIFF format (collage files).

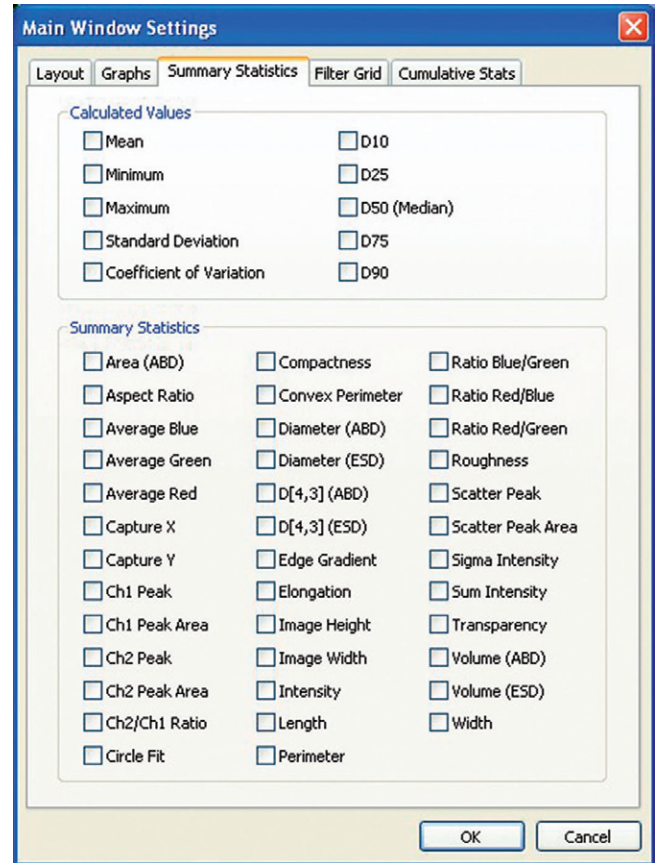
Histogram & Scatterplot Choices (choose up to 4 total):

Histograms	Scatterplots
Diameter Frequency	Diameter vs. Aspect Ratio
Diameter Log Frequency	Diameter vs. Transparency
Volume Frequency	Diameter vs. Intensity
Diameter PPM	Diameter vs. Edge Gradient
Diameter PPM Percentage	Diameter vs. Circle Fit
Diameter Particles/ml	Diameter vs. Ch2/Ch1 Ratio
Aspect Ratio Frequency	Diameter vs. Ch1
Aspect Ratio Volume Frequency	Diameter vs. Ch2
Aspect Ratio PPM	Diameter vs. Scatter
Transparency Frequency	Ch1 vs. Ch2
Transparency Volume Frequency	Ch1 vs. Scatter
Transparency PPM	Ch2 vs. Scatter
Ch1 Peak Frequency	CaptureX vs. CaptureY
Ch2 Peak Frequency	Aspect Ratio vs. Intensity
Scatter Peak Frequency	Aspect Ratio vs. Edge Gradient
Ch1 Peak Log Frequency	Edge Gradient vs. Intensity
Ch2 Peak Log Frequency	Circle Fit vs. Edge Gradient
Scatter Peak Log Frequency	
CaptureX Frequency	
CaptureY Frequency	
Intensity Frequency	
Edge Gradient Frequency	
Circle Fit Frequency	

Summary Statistics to Calculate & Export:

Default = All

If less summary statistics are desired, then check only those desired below.



Advanced Analysis: Contact Fluid Imaging Technologies

Many advanced analysis services are available. For example, advanced statistical pattern recognition filters may be developed to differentiate and quantitate different particle types contained in the same sample. Please contact Fluid Imaging at (207) 846-6100 to discuss any specific analyses you might desire.

Optional Services (for Basic or Advanced Analyses):

- Additional/Custom Graphs
- Web-Based Interactive Presentation of Results
- Formal Written Lab Report
- For Other Custom Services Contact Fluid Imaging for Details

Please also read and submit the [Sample Submission Form](#) with your sample(s). Fluid Imaging reserves the right to return any sample material submitted for proper disposal.

